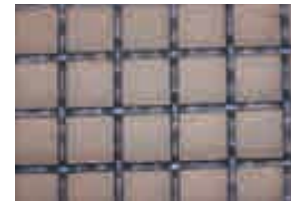


Reference Code	Boarder	Crimp Type	Aperture Size (mm)	Wire Size (mm)	Weight Kg/m2	Open Area %
B09	9.6	Single Crimp	9.70	3.15	9.9	57
B10	10	Single Crimp	10.0	2.50	6.4	64
B12	12	Double Crimp	12.0	2.00	3.6	73
B16	16	Double Lock	16.0	3.15	6.6	70
B17	17.5	Double Crimp	17.5	3.15	6.1	72
B19	19	Double Lock	19.0	5.00	13.2	63
B20	20	Double Lock	20.0	4.00	8.5	69
B22	22	Double Lock	22.0	5.00	11.76	66
B25	25	Flat Lock Crimp	25.0	3.15	4.5	79
B40	40	Lock Crimp	40.0	4.00	4.62	82
B50	50	Lock Crimp	50.0	5.00	5.77	83

Material Available:

- Zinc Aluminium Wire
- Heavy Galvanised Wire
- Bright Hard Drawn Wire
- Black High Tensile Wire
- T316 Stainless Steel Wire

*** All Border Mesh Can Be Powder Coated**



*Square Mesh
(Double Lock)

Crimp Types Available:

- Single Crimp
- Double Crimp
- Double Lock
- Flat Lock Crimp
- Lock Crimp

* Weldrite (NZ) – 32.4 apt x 6.0 wire BHD